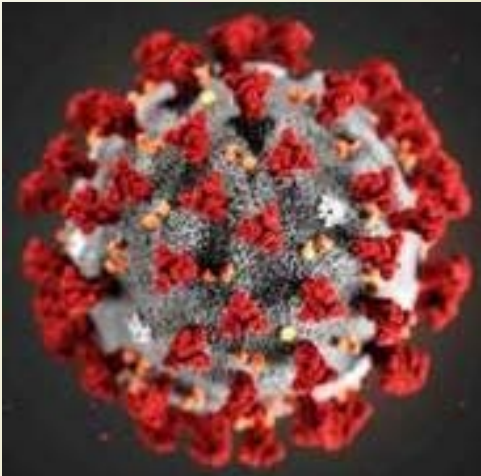
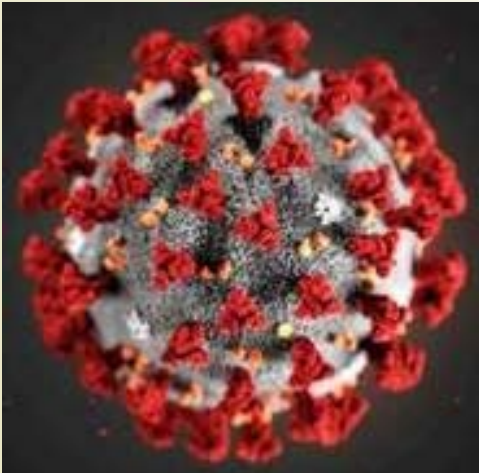




Action Taken Report & Preparedness

for

COVID -19 Outbreak



MONGAR DZONGKHAG
March 31, 2020

Presentation Outline

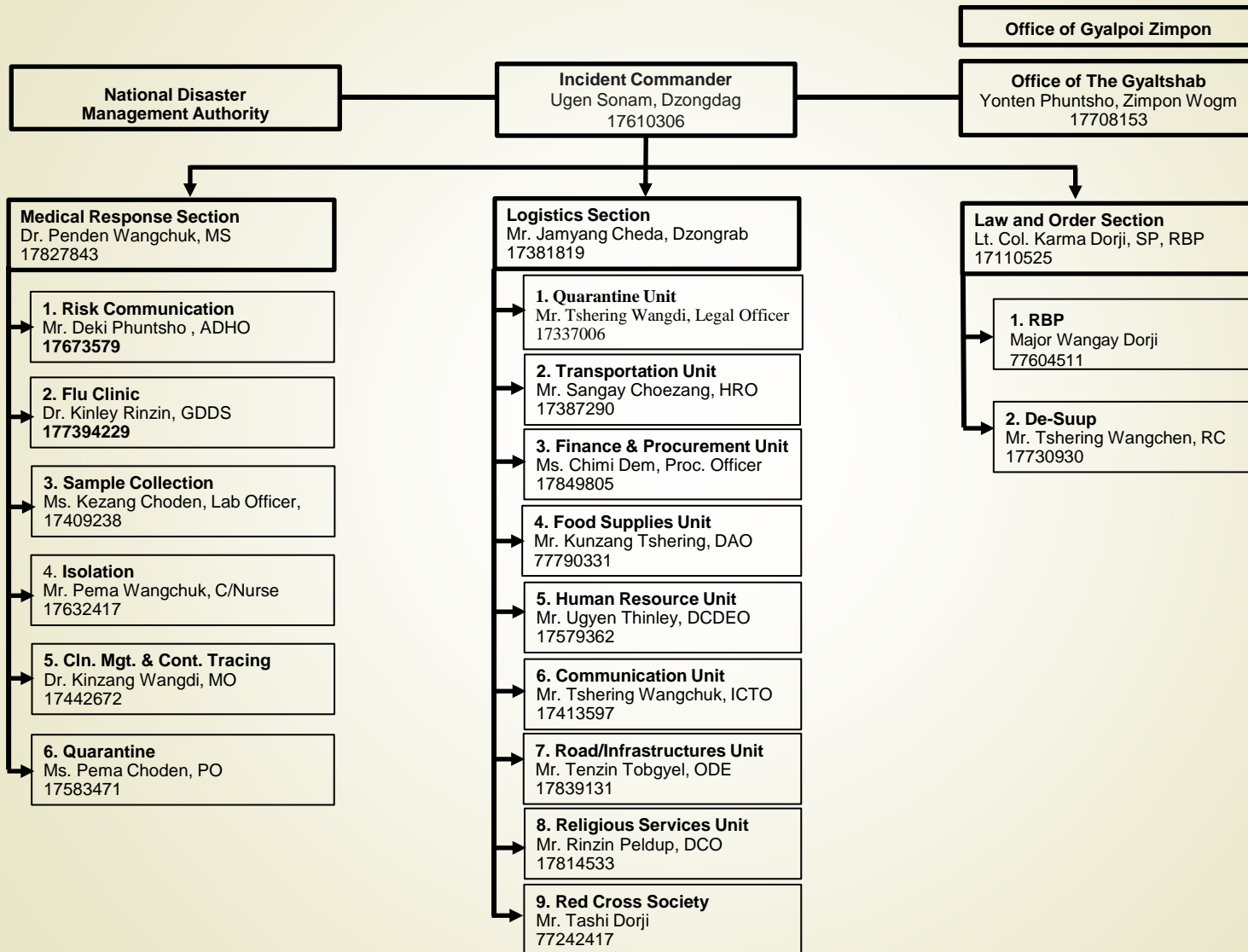
1. ICS organogram
2. Risk Communication Programmes
3. Vulnerable Population (Towns & Rural areas)
4. Logistics
5. Issues



Action Taken

- ← **Dzongkhag Disaster Incident Command System activated**
- ← **SOP Prepared**

Incident Command System for COVID19

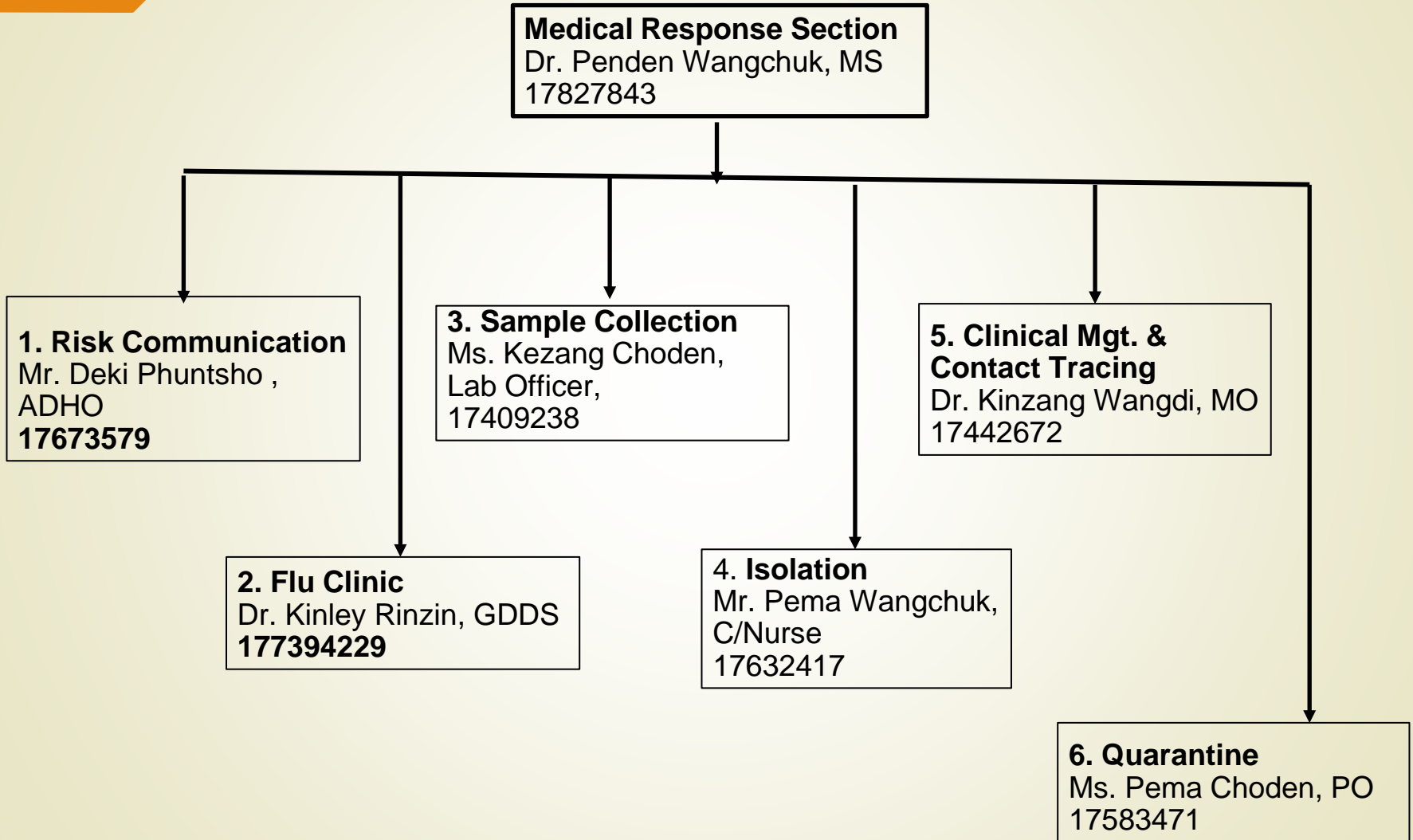




Action Taken

1. Medical Response Section
2. Logistics Section
3. Law and Order Section

Action Taken – Medical Response Section



Action Taken - Medical Response Section

1. Risk Communication

Risk Communication

- ▶ Completed 2 rounds awareness/sensitization covering 27,864 people in Gewogs, Schools, Dratshangs, Shedras, Regional Offices, Business Community, De-Suups, Red Cross Society members, buses and taxi operators;
- ▶ Completed door-to-door awareness in all Gewogs and Mongar town covering 9126 people;
- ▶ Government advisory notifications circulated to all Gewogs and offices;

Risk Communication



- ▶ Provision of hand sanitizers/handwashing facilities installed at offices and some shops;
- ▶ Advised to avoid non-essential travels;
- ▶ Suspended mass gathering, leave, tour, games and sports
- ▶ Schools and GCIT closed;
- ▶ Entertainment places closed;

Risk Communication

- ▶ Information imparted through Dzongkhag Facebook page, Local TV (Mongar, Gyalpoizhing and Lingmethang) & Social Media groups (wechat/ telegram/ whatsapp)
- ▶ Circulation and display of pamphlets, posters at public places
- ▶ Audio visual in Dzongkha, Tshangla & Lhotsham in public places/transports

Action Taken - Medical Response Section

2. Flu Clinic

- ▶ Set up flu screening area (09/02/2020 on wards)
- ▶ Set up 24 hours Flu clinic (11/03/2020 on wards)

3. Sample Collection set up (Tent).

- ▶ COVID-19 testing equipment installed and conducted one trial test

Action Taken - Medical Response Section

4. Isolation – Isolation facility established at Zimchung.

- ▶ Set up 6 bedded ICU at Zhimchung with 3 ventilators with surge capacity of 4 beds
- ▶ Set up OT, delivery room, X-ray and Ultrasound facility in ICU
- ▶ Set up 26 bedded Isolation ward with surge capacity of 7 beds.

Action Taken - Medical Response Section

5. Clinical Management and Contact Tracing

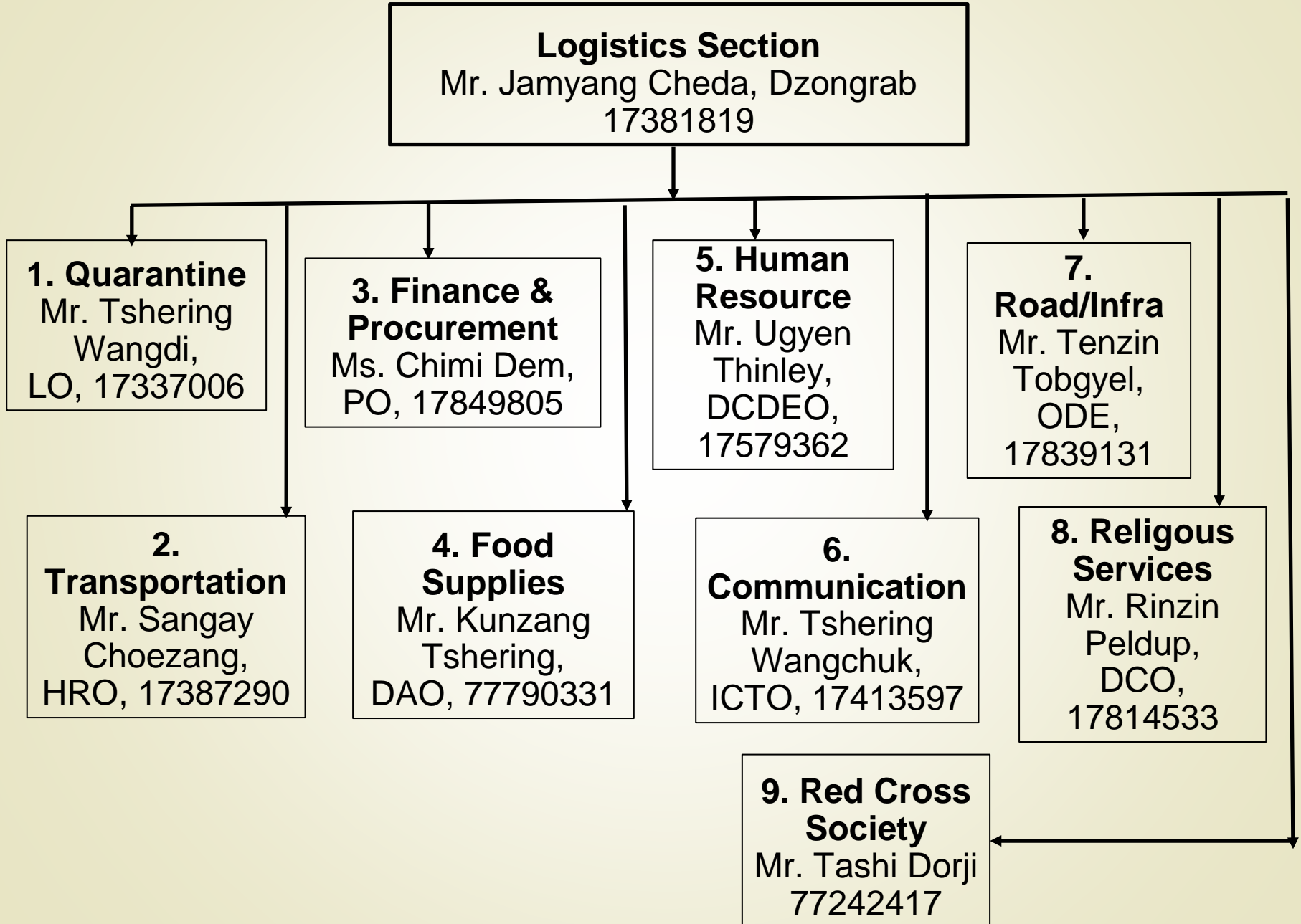
➤ Stocked PPE and medical supplies. **Need more**

5. Quarantine – Manages four home quarantine persons

Action Taken - Medical Response Section

- 1. Developed hospital preparedness and response plan for COVID-19.**
- 2. Developed SOPs for COVID-19.**

Incident Command System for COVID19





Action Taken - ICS

1. Population and Vulnerability

2. Resource Mapping and Gaps

Vulnerable Population by Age and Comorbidities

Particular	Total Population	Population at Risk	
		By Age Group <5yrs & >60yrs	By Comorbidities >60yrs
Urban	10297	10.88%	28.59%
Rural	26,853	23.20%	61.63%
TOTAL	37150	34.08%	90.22%

Vulnerable Population by Age and Comorbidities

URBAN Population Risk Analysis:

By age	Mongar town has highest risk with 13.16% & Yadi town with lowest of 4.93%
By Comorbidity	Yadi town has highest risk with 5.62% & Mongar, Kilikhar & Damedtse with lowest risk o 0%
By age & comorbidity	Lingmethang town has highest risk with 6.10% & Kilikhar town with lowest risk of 0.38%

Vulnerable Population by Age and Comorbidities

RURAL Population Risk Analysis:

By age	Tsakaling Geowg has highest risk with 34.71 % & Mongar Gewog with lowest 19.06%
By Comorbidity	Tsamang Gewog has highest risk with 35.88% & Chagsakhar with lowest risk 0.28%
By age & comorbidity	Mongar Gewog has highest risk of 37.66% & Drepong Gewog with lowest risk of 1.51%

ATR - Quarantine Unit

SOP developed

- **Identified quarantine facilities (29 centers, 3560 beds);**
- **Installed necessary amenities for Phase-I QCs;**
- **Completed surveys for installation of amenities at Phase-II QCs;**

ATR - Quarantine Unit

Quarantine Centers

Quarantine Facilities- Phase-I – Ready to use anytime

1. Wangchuk Hotel - 32 rooms, 54 Beds
 2. Zhongar Hotel - 16 rooms, 27 Beds (expandable-7 rooms)
 3. De-Suup Guest House - 10 rooms, 18 beds
 4. Rtd. Armed Force GH - 16 rooms, 30 beds
- Total 74 rooms, 129 beds**

Quarantine Facilities- Phase-II

1. Kidheykhar CS - 14 rooms, 209 beds (expnd-6 rooms, 60beds)
 2. Guest houses (6 centers) - 126 beds
 3. Hostel (18 centers) - 3122 beds
- Total (24 centers) - 3457 beds**

ATR- Transportation Unit

SOP Developed

- Vehicle inventory completed

Agency	Heavy vehicles	Medium	Light	Total
Govt. vehicle	0	21	49	70
Private vehicle	0	25	54	79
TOTAL	0	46	103	149

- Vehicle deployment plan ready – 2 times simulation conducted

ATR - POL

Storage Capacity

Products	BOD, Mongar	DPCL, G/zhing	Total
Petrol (ltrs)	15,000	20,000	35,000
Diesel (ltrs)	40,000	20,000	60,000
LPG	540	465	1005

ATR - POL

Months consumption of POL

POL	BOD, Mongar	DPCL, G/zhing	Total
Petrol (ltrs)	50-60,000	20-21,000	70-81,000
Diesel (ltrs)	150-160,000	18-20,000	168-180,000
Subsidized LPG	14-1500	10	14-1510
LPG	100-120		100-120

ATR - POL

Issued letter to BOD and DPCL Managers to:

- ← Prepare SOP detailing the submission of Timely POL requisition to their Regional Offices and to ensure continuous supply of POL products at all times
- ← Submit daily POL stock balance report to Transportation Unit, ICS

ATR - Finance & Procurement Unit

Inventory of Essential Commodities

Major Traders (By RTIO)

- ▶ 31 majors Traders in Gyalpoizhing, Lingmethang & Mongar
- ▶ Stock as on March 17, 2020 (Rice, oil, salt, sugar, tea leaf, milk powder, atta, maida) = 161.5 MT
- ▶ Purchasing capacity = 677MT (they lack storage space)

ATR - FCBL

1. Requirement projection
2. Storage capacity
3. Stock inventory

Projected Quantity of Essential Commodities Required for Mongar Dzongkhag

Item	Qty/ person/ day (kgs)	Qty/months (MT)	Qty for 3 months (MT)	Qty for 6 months (MT)
Rice	0.274	305.33	915.99	1832.00
Oil	0.027	30.00	90.00	180.00
Pulses	0.027	12.00	36.00	75.00
Sugar	0.011	12.00	36.00	75.00
Salt	0.011	12.00	36.00	75.00

ATR - FCBL

Storage Capacity

- ▶ Present Go-down = 750MT
- ▶ Need additional space for storage of 1487MT
 - Identified 1 MPH at Gyalpoizhing and 2 MPHs at Mongar*
- ▶ 15 farm shops in 15 Gewogs can store 15-20MT in each farm shop. Can store 225 – 300MT
- ▶ 2 farm shops at Tsamang and Drepong Gewogs will be opened if required and can store additional of 30 – 40 MT

ATR - FCBL

Stock as on 29th March, 2020

Item	Qty in MT	Remarks
Rice	150	
Pulses	5	
Salt	1.58	
Sugar	0.5	
Oil	12	
Everyday Milk	0.76	
Cheese	0.24	
Milk	0.00	
Butter	0.00	

ATR - Food & Ration Supply Unit

- ▶ SOP Developed
- ▶ Food catering to QCs
- ▶ Ration supply to Gewogs and towns

ATR - Food Catering

Food catering to quarantine centers (Menu as per MoH's prescription)

- ▶ Hotel Norphel, Mongar quoted lowest and identified for catering to QCs in Mongar town
- ▶ Catering for Gyalpoizhing and Lingmethang will be cooked by catering services team of Gyalpoizhing at GCIT
- ▶ Catering for other QCs (Kidheykhar CS and Mongar HSS) will be cooked by catering team at the QC area
- ▶ Cooks and helpers identified

Delivery of Essential Commodities

Ration (rice, pulses, oil and salt) supply to 17 Gewogs

- ▶ Distance from Mongar to Gewog Centers
- ▶ Distance from Gewogs to Chiwogs
- ▶ Identified pickup points
- ▶ Distance from Mongar to pickup points
- ▶ Ration requisition and handing taking over forms prepared
- ▶ Gewogs will pick up from pickup points
- ▶ Gewogs will drop at the Chiwog pickup points
- ▶ Households will pickup from Chiwog pickup points on payment

ATR-Regional Trade & Industry Office

Market Monitoring and Surveillance by RTIO

Unfair Trade Practices

- ▶ hoarding, exorbitant price, price rigging and collusion, price manipulation, denial of sale of goods, unnecessary closure of business, compulsory affix price tag, weights and measures, issuance of money receipt as per OCP Act 2012,
- ▶ Sensitization on Consumer Protection Act 2012 and Consumer Protection Rules and Regulation 2015.

ATR - Human Resource Unit

Summary of Human Resource Inventory

Sl.No.	Staff	Male	Female	Total
1	Education Staff	575	382	957
2	Health Staff	74	32	106
3	RNR staff	31	12	43
4	Regional staff	286	95	381
5	Dzongkhag	142	54	196
	Total	1108	575	1683
1	Red Cross Society			77
2	De-Suup			128
3	RBP			150
	Total			355
	Grand Total			2038

ATR - Human Resource Unit

- ▶ **Conducted training on self prevention and donning & doffing of PPE**
 1. **RBP (99)**
 2. **De-Suups (60)**
 3. **Civil Servants (65)**

ATR - Communication Unit

SOP Developed

- ▶ Dzongkhag Emergency Operation Center activated (VSAT, Handset, SIM Card phones)
- ▶ Installation of internet facilities and fixed lines at Isolation and ICU completed
- ▶ Internet facilities/WiFi in phase-I QCs completed (Customer Premises Equipment)
- ▶ Survey for internet facilities/WiFi connection for phase-II QCs completed

ATR- Road & Infrastructure Unit

SOP developed

- **Maintenance of Gyalpoizhing-Nganglam Highway submitted to MoWHS**
- **SOP for national highway maintenance under Mongar Dzongkhag being developed by RO, DoR, Lingmethang**
- **GC roads block prone areas being identified**
- **Heavy machineries available in different Gewogs identified**
- **Distance from Dzongkhag to Gewog Centers to Chiwogs**

ATR-Religious Services Unit

- ▶ **SOP developed**
- ▶ **SOP on handling of dead body developed by MoH**
 - ▶ **Crematorium identified**
 - ▶ **Gewogs are asked to identify crematorium in case of surged situation**
 - ▶ **Dratshang has agreed to carry out all the required funeral rites**

ATR – Utilities Unit

SOP developed

Water supply

- ▶ New water supply from Chompa to Kidheykhar Quarantine Center
- ▶ Spare water pumps is being installed

Electricity

- ▶ DG set installed for isolation and ICU facility

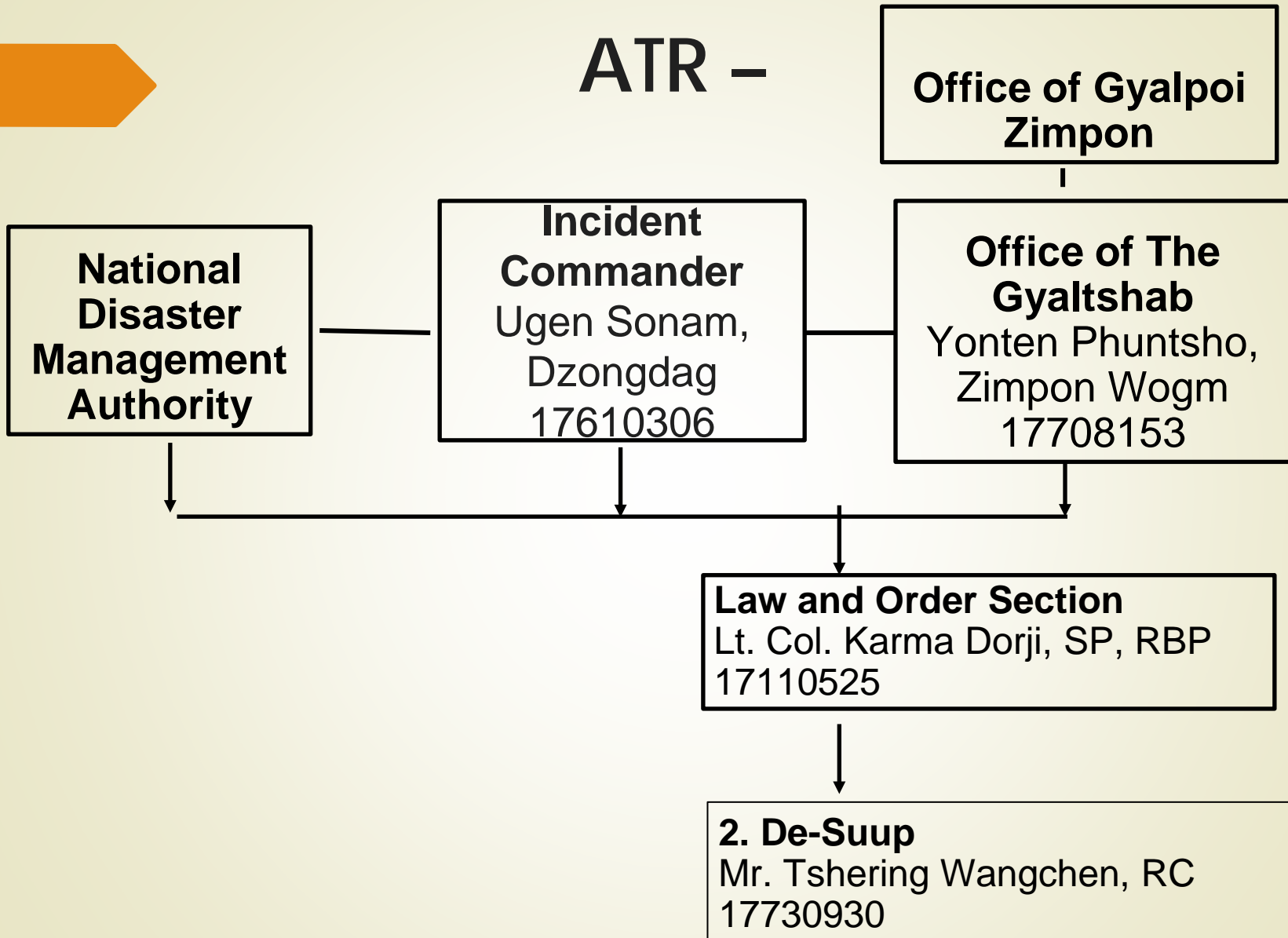
Others

- ▶ Inventory of utensils in different schools and Gewog Centers completed

ATR – Waste Management Unit

- ▶ SOP developed
- ▶ SOP on handling of waste developed by MoH

ATR –



ATR – Law and Order

RBP

- ▶ Total Strength = 6 officers & 162 personnel
- ▶ Below 45 years = 124 identified for frontline COVID-19 duty
- ▶ 99 personnel trained by ERRH on COVID-19 self prevention and PPE donning and doffing
- ▶ Conducted simulation for quarantine, isolation and lockdown checkpoints

ATR – Law and Order

RBP

- ▶ Identified old traditional routes connecting Mongar Dzongkhag and neighboring Dzongkhags Line listing of people living abroad completed – **829**
- ▶ Inventory of expatriate working *under* Mongar Dzongkhag completed - **375**

ATR – Law and Order

RBP - Deployment Plan ready

- ▶ Quarantine duty - 6 teams ready for Mongar
- ▶ 22 personnel for lockdown Check Points
- ▶ Isolation Ward duty - 1 team
- ▶ Contact Tracing - 1 officer and 7 competent personnel identified from various units
- ▶ Surveillance - 1 Officer and 7 competent personnel at task
- ▶ QRT - 1 Officer and 15 personnel ready

Strategy During Lockdown – RED ZONE



Scenario during Lockdown – Red Stage

- **Overwhelmed/overstressed health officials, infrastructure, and medical supplies**
- **Impact on local economy - Breakdown in supply chain of essential items, unfair trade practices, loss of jobs**
- **Social Impact - Extreme panic and chaos in the community and mass exodus to other places**
- **Several death cases – grief, sorrow, stress and depression**
- **Possible disruption of law and order in the community**

Impact on Local Economy and Strategy

Impact	Strategy
Breakdown in supply chain of essential items	<ol style="list-style-type: none">1. Ensure uninterrupted supply of essential food items to consumers<ol style="list-style-type: none">a. FCB has started stocking essential commodities enough for six months <p>Stock as on 29/03/2020</p> <ul style="list-style-type: none">• Rice - 150MT, (-1680)• Pulses - 5MT, (-70)• Salt - 1.58MT, (-73.42)• Sugar - 0.5MT, (-74.5)• Oil - 12MT, (-168)• Everyday Milk - 0.76MT,• Cheese - 0.24MT

Impact on Local Economy and Strategy

Impact	Strategy
Breakdown in supply chain of essential items	<ol style="list-style-type: none"><li data-bbox="548 465 1843 565">1. Ensure uninterrupted supply of essential food items to consumers:<li data-bbox="548 636 1634 736">b. Identified 31 major traders in Gyalpoizhing, Lingmethang & Mongar<ul style="list-style-type: none"><li data-bbox="564 808 1831 908">• Stock as on March 17, 2020 (Rice, oil, salt, sugar, tea leaf, milk powder, atta, maida) = 161.5 MT<li data-bbox="564 979 1727 1079">• Purchasing capacity = 677MT (they lack storage space)

Impact on Local Economy and Strategy

Impact	Strategy
Breakdown in supply chain of essential items	<ol style="list-style-type: none"><li data-bbox="568 465 1864 565">1. Ensure uninterrupted supply of essential food items to consumers:<ul data-bbox="568 636 1846 1196" style="list-style-type: none"><li data-bbox="568 636 1846 736">• Door-to-Door/Mobile service delivery in and around town areas<li data-bbox="568 808 1582 853">• Delivery till Gewog Centre road junction<li data-bbox="568 925 1846 1082">• Encourage and support traders to keep their shops open (Eg. Doksumpa has agreed to keep their shop open 24/7 if required)<li data-bbox="568 1153 886 1196">• Rationing

Impact on Local Economy and Strategy

Impact	Strategy
Breakdown in supply chain of essential items	<p>2. Ensure uninterrupted operation of businesses:</p> <p>c. For continuous supply of 16 essential items to traders, the following 9 suppliers have been identified by MoEA.</p> <ul style="list-style-type: none">i. Tashi Commercial Corporation (Phuentsholing),ii. Sherza Ventures Ltd.(Thimphu),iii. Big Way Pvt. Ltd. (Gelephu),iv. 8 Eleven (Thimphu)v. UT Trading, Zimdra, (Thimphu)vi. DK Traders (Gelephu)vii. XIMI Vogue (Thimphu)viii. Paro Canteen (Paro)ix. Jimmy Commercial (Doksum, Trashiyangtse) <p><i>Note: MoU pending</i></p>



Impact on Local Economy and Strategy

Impact	Strategy
Breakdown in supply chain of essential items	3. Enhance local food production: <ul style="list-style-type: none"><li data-bbox="527 648 1702 753">• Stimulus Plan for Food Production prepared and submitted to MoAF for funding<li data-bbox="527 822 1702 928">• Budget for market linkages between farmers and schools and hospitals approved<li data-bbox="527 996 1827 1148">• Encourage civil and corporate employees to make kitchen garden in state land/vacant private land – Vacant land of MMSS identified and cleared - teachers



Impact on Local Economy and Strategy

Impact

Unfair trade practices

Strategy

- 1. Aggressive Market Monitoring and Surveillance on:**
 - hoarding, exorbitant price, price rigging and collusion, price manipulation, denial of sale of goods, unnecessary closure of business, compulsory affix price tag, weights and measures, issuance of money receipt as per OCP Act 2012**
- 2. Sensitization and enforcement of:**
 - Consumer Protection Act 2012 and Consumer Protection Rules and Regulation 2015.**



Impact on Local Economy and Strategy

Impact	Strategy
Loss of jobs (private sector employees and truck, taxi and bus drivers)	<ol style="list-style-type: none"><li data-bbox="658 582 1702 682">1. Provide business opportunities through quarantine facilities and catering to hotels<li data-bbox="658 753 1750 796">2. Employ private vehicles for COVID-19 duties<li data-bbox="658 868 1619 968">3. Submit list of employees to MoLHR for intervention



Social Impact and Strategy

Impact

1. Extreme panic and chaos in the community

2. Mass exodus to other places

Strategy

- **Moral boosting & counseling by counsellors and religious figures**
- **Complete lockdown of Mongar Dzongkhag**
- **Sensitization and counselling**
- **Deploy RBP. Mobilize De-Suups and Civil Servants to support RBP**



Social Impact and Strategy

Impact

**Several death cases –
grief, sorrow, stress and
depression**

Strategy

- **Provide full moral support and counseling by counsellors**
- **Religious discourses by Lalops and Lhatruels**
- **Dratshang is ready to provide any support related to death rituals**



Social Impact and Strategy

Impact

Possible disruption of law and order in the community

Strategy

- 1. Sensitization on the provision of the Constitution of the Kingdom of Bhutan, Penal Code of Bhutan and relevant Act/Rules and Regulations and its ramifications thereof**
- 2. Deploy RBP. Provide support to RBP by De-Suups, Friends of Police (FOP) and civil servants whenever required**
- 3. Mobilize additional RBP personnel and De-Suups from other unaffected Dzongkhags and Chukha**
- 4. RBA may also be mobilized**



Kadrinchey La



ISSUES



Issues

FCBL – Stock is not enough for one month

- 1. Rice - 150MT, (-1680)**
- 2. Pulses - 5MT, (-70)**
- 3. Salt - 1.58MT, (-73.42)**
- 4. Oil - 12MT, (-168)**





Issues

POL

- POL trucks coming via Trashigang – Cost
- Low storage capacity of POL
- Prevailing stock can suffice only up to one week



Issues

- Unavailable HDPE pipes required for irrigation – Druk Pipe does not have raw materials to manufacture due to lockdown of India