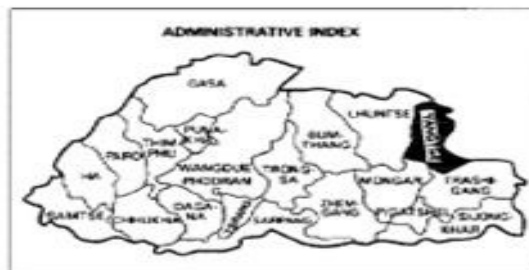


Emergency Preparedness and Response Plan for COVID -19 Outbreak

TRASHI YANGTSE DZONGKHAG 2020

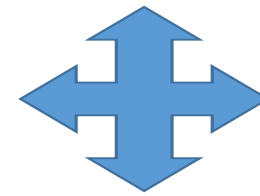
TRASHIYANGTSE DZONGKHAG

Scale 1: 380 000



CHINA

N



Lhuntse

Tashi
Yangtse

INDIA

Lhuntse

Tashi Yangtse

Trashigang

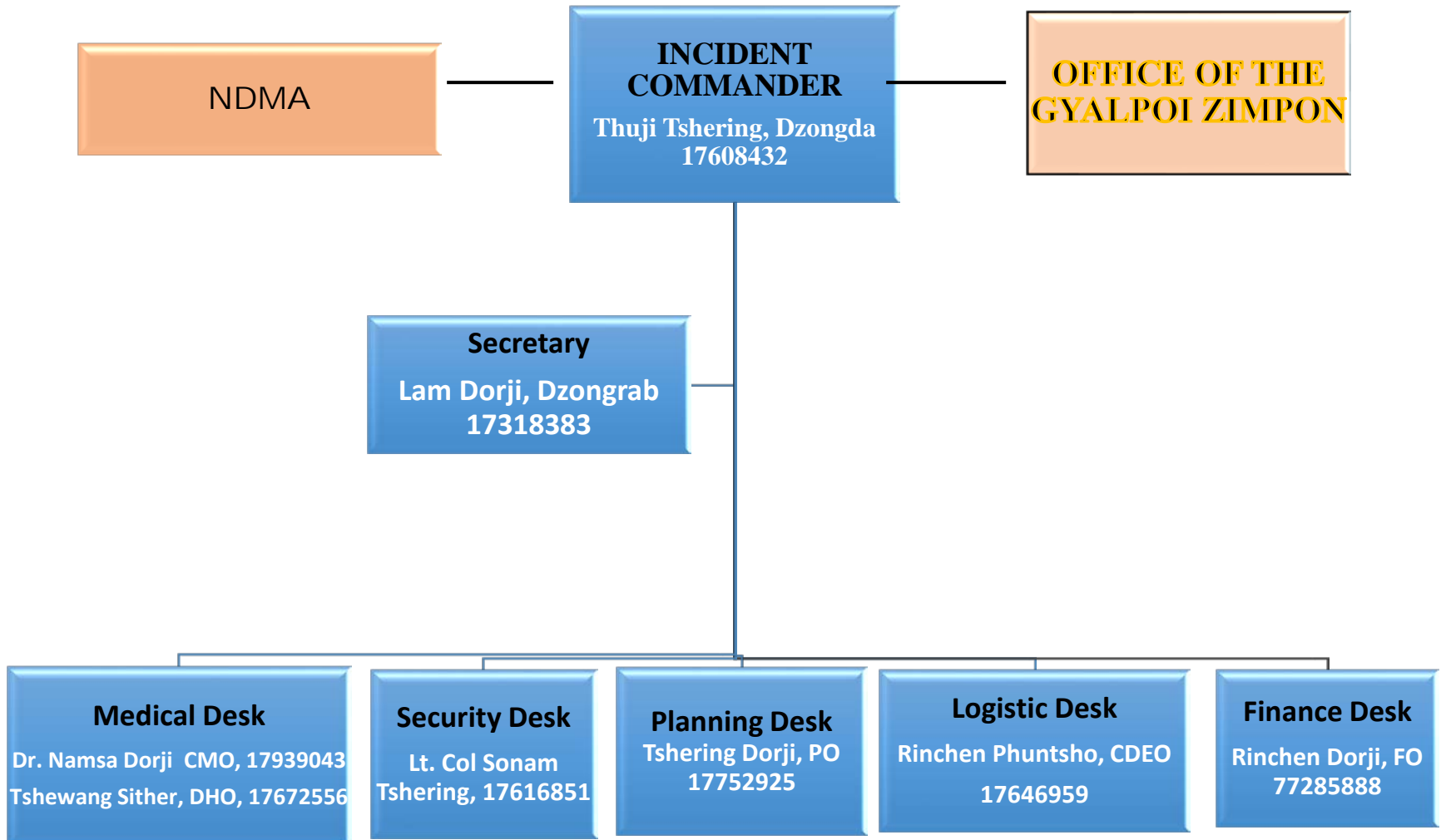
Mongar

Trashigang

Mongar



Dzongkhag Incident command System



Lower Trashi Yangtse:
Khamdang, Toedtsho, Yallang, Ramjar, Jamkhar, Tongmijangsa
Population: 10555

MEDICAL DESK

Dr. Namsa Dorji, CMO,
17934094
Tshewang Sithar, DHO,
17672556

SECURITY DESK

Nado IC Duksum
PS 17694011
(11 Police personal)
(16 Foresters)
(35 Desuups)

**PLANNING
DESK**

Tshering Dorji,
PO, 17752925

LOGISTIC DESK

Rinchen Phuntsho, CDEO,
17646959

FINANCE DESK

Rinchen Dorji, FO
77285888

**DISEASE OUTBREAK
AND SURVEILLANCE**

Mr. Singay Dorji,DHO,
17812353

QUARANTINE

Mr. Ugyen Phuntsho
17914294

**ISOLATION & CASE
MANAGEMENT**

Dr. Namsa Dorji,
17934094

RISK COMMUNICATION

Mr. Tshewang Sither
17672556

**MEDICAL SUPPLIES &OP
LOGISTICS**

Mr. Tshering Namgay
17745016

SURVEILLANCE

POE SCRENNING

CONTACT TRACING

QUARANTINE

ISOLATION

CROWD CONTROL

**STUATION AND
DOCUMENTATION**

Mr. Lekjay, Tshogdrung
17659900

**HUMAN RESOURCES
MANAGEMANT**

Mr. Yonten Jamtsho, DSO
17616275

MARKET SURVEILLANCE

Ms. Chimi Yuden, EDO
17962621

DEMOLBILIZATION

Mr. Jigmela, Legal
17361574

Transportation:

Niten Baraily, RSTA, 17648553

Communication :

Ms. Thinley Pemo, Tcell Manager,
77456626
Mr. Gyembo Tshering, BT Manager,
17114590

Quarantine/Isolation Spaces:

Mr. Tashi Rabten, AE, 17678625
Mr. K.B Sichuri, Principal KLSS,
17760158

Food Supplies: Mr. Dorji,
Livestock Officer, 17648068; Tenzin
Mr. Chador, VP KLSS, 17646267

Cremation Services:

Mr. Tashi Dawa, Culture Officer,
17806008.
Mr. Drododen Lam Cheki Dorji,
17512710, Yangtse Durthroee,

Fuel Supply: Mr. Sonam Wangchuk
Sales Asst, 77885806

Mr. Sonam Norbu, Sales Asst.
17583490

Ration supply : Mr. Pema Phurba sales
Asst. , 17896380

**Upper Trashi Yangtse:
Yangtse and Boomdeling
Population: 6523**

MEDICAL DESK

Dr. Namsa Dorji, CMO,
17934094
Tshewang Sithar, DHO,
17672556

**DISEASE OUTBREAK
AND SURVEILLANCE**

Mr. Singay Dorji,DHO,
17812353

QUARANTINE

Mr. Ugyen Phuntsho, CN
17914294

**ISOLATION & CASE
MANAGEMENT**

Dr. Namsa Dorji, CMO
17934094

RISK COMMUNICATION

Mr. Tshewang Sither,
DHO, 17672556

**MEDICAL SUPPLIES &OP
LOGISTICS**

Mr. Tshering Namgay,
Pharm. Tech
17745016

SECURITY DESK

Maj. Urung Dorji,
17640054
(53 Police personal)
(21 Foresters)
(32 Desuups)

SURVEILLANCE

POE SCRENNING

CONTACT TRACING

QUARANTINE

ISOLATION

CROWD CONTROL

**PLANNING
DESK**

Tshering Dorji,
PO, 17752925

**STUATION AND
DOCUMENTATION**

Mr. Lekjay , Tshogdrung
17659900

**HUMAN RESOURCES
MANAGEMANT**

Mr. Ngawang Tenzin,
HRO
17616275

MARKET SURVEILLANCE

Ms. Rinchen Lhamo,
REDCL
17736189

DEMOLBILIZATION

Mr. Jigmela, Legal
17361574

LOGISTIC DESK

Rinchen Phuntsho,
CDEO, 17646959

Transportation:

Tandin Wangchuk, LRO. 17442479
Chekey, ADLO, 17554013

Communication :

Thinley Pemo, Tcell Manager, 77456626
Gyembo Tshering, BT Manager,
17114590

Quarantine/Isolation Spaces:

Rinchen Leyda, Offg.DE, 17681918
Dechen Gyembo, VP TYLSS, 17653815
Sonam Dorji, Teacher. BCS, 17614688

Food Supplies:

Phurpa Tshering, DLO, 17633265
Singye WangchukWarden BCS,
17901840

Cremation Services:

Tashi Dawa, Culture Officer ,17806008
1. Drodoen Lam Cheki Dorji,
17512710,Yangtse Durthrooe,

Fuel Supply: Purna Badhur , 77674419

Ration Supply: Sunil Muktan FCB, Manager,
17867255

FINANCE DESK

Rinchen Dorji, FO
77285888

Core members of Incident Command System

Sl/no	Name	Designation	Contact number
1	Thuji Tshering	Dzongdag	17608432
2	Sonam Tshering	Superintendent of Police	17616851
3	Lam Dorji	Dzongrab	17318383
4	Lop Ugyen Tshewang	Drungchen	17942217
5	Rinchen Phuntsho	CDEO	17646959
6	Gonpo	DT Dy. Chairperson	17701219
7	Tshewang Sither	DHO	17672556
8	Lekjay	DDMO	17659900
9	Rinchen Dorji	FO	77285888

Overall Resident Population

Sl	Gewog/Throm	Male	Female	Total
1	Boomdeling	1033	1096	2129
2	Jamkhar	487	483	970
3	Khamdang	1544	1665	3219
4	Ramjar	606	589	1195
5	Toedtsho	742	835	1577
6	Tongmijangsa	841	892	1733
7	Yalang	682	685	1367
8	Yangtse	617	667	1284
9	Yangtse Throm	1586	1524	3110
10	Doksum Throm	286	208	494
	Total	8,424	8,644	17,078

Source: Projected Population 2019 based on PHCB 2017

Population by Age Group

Age Group	Male	Female	Total	3,373 out of 17,078 falls under vulnerable age group
0-5	765	719	1483	
6-9	891	914	1805	
10-14	973	1015	1987	
15-19	845	835	1680	
20-24	603	532	1134	
25-29	727	693	1420	
30-34	649	630	1279	
35-39	598	586	1184	
40-44	532	488	1020	
45-49	367	395	762	
50-54	390	402	791	
55-59	304	338	642	
60-64	324	293	617	
65-69	263	249	512	
70-74	170	152	322	
75+	201	238	439	
All Ages	8,599	8,479	17,078	

Source: Projected Population 2019 based on PHCB 2017

Measures Taken

- Activated Dzongkhag Disaster Incident Command System
- Formed Dzongkhag COVID-19 Prevention Task Force on 13th February 2020
- Compiled SOPs for prevention/management of COVID-19 provided by MoH
- Drafted the first version of COVID 19 prevention and response plan and updated the subsequent versions.
- Implemented surveillance/restriction of movement of people through unofficial entry points at Jangphutse, Manam, and Dukti under Yallang Gewog

Measures Taken

- Deferred Melam Chenmo, Bazaguru Dungdrup, Chenga Kora, Namgang Kora, and Gomphu Kora events.
- Carried out awareness on COVID-19 in all 29 schools and 8 gewogs.
- Established outdoor flu clinics at Yangtse and Khamdang hospitals.
- Identified quarantine and isolation places for COVID-19 contacts and case handlers for both upper and lower Trashi Yangtse separately

Measures Taken

- Issued notification to Gewogs, Throms, Regional offices and civil servants to avoid mass gatherings,
- Activated Hospital Contingency Plan and Incident Command System.
- Implemented mandatory line listing of taxi commuters by the drivers.
- Implemented community surveillance to track new arrivals from outside the country.

RISK & ACTION TAKEN

Sl/no	RISK	ACTION TAKEN
1	Inflow of expatriate workers at KHEL (Kholongchu Hydro Energy Limited) and other construction companies.	Instructed concern contractors to line list the workers and monitor their movements. Conducted coordination meeting, awareness to KHEL workers and other stakeholder.
2	Movement of people through unofficial entry points (Jangphutse, Manam, Dukti and Shingphel).	Security and surveillance tighten up with the help of RBA, RBP and notified local leaders of bordering gewogs to scale up community vigilance.
3	Possible outbreak of dengue, malaria and rabies (particularly at Doksum town)	Planning to collaborate with Trashigang Dzongkhag and come up with proposals. Conducted advocacy and monitored the town strictly.
4	Non/False declaration of travel history at the point of entries and health facilities.	Community are on high alert for any new faces. Conducted awareness programs.

Current status

- **Quarantine facilities setup:**

Bayling CS :- Male 25, Female 25, Total 50.

Tsenkharla CS:- Male 10, Female 16, Total 26.

- **Isolation facilities setup:**

Dzongkhag court: Male 15, Female 15, Total 30.

- **Total no. of patient quarantined.**

Quarantine facility:- 1 Male and 2 Female.

Home Quarantine :- 3 Male.

Emergency Operation Center (Control Room)

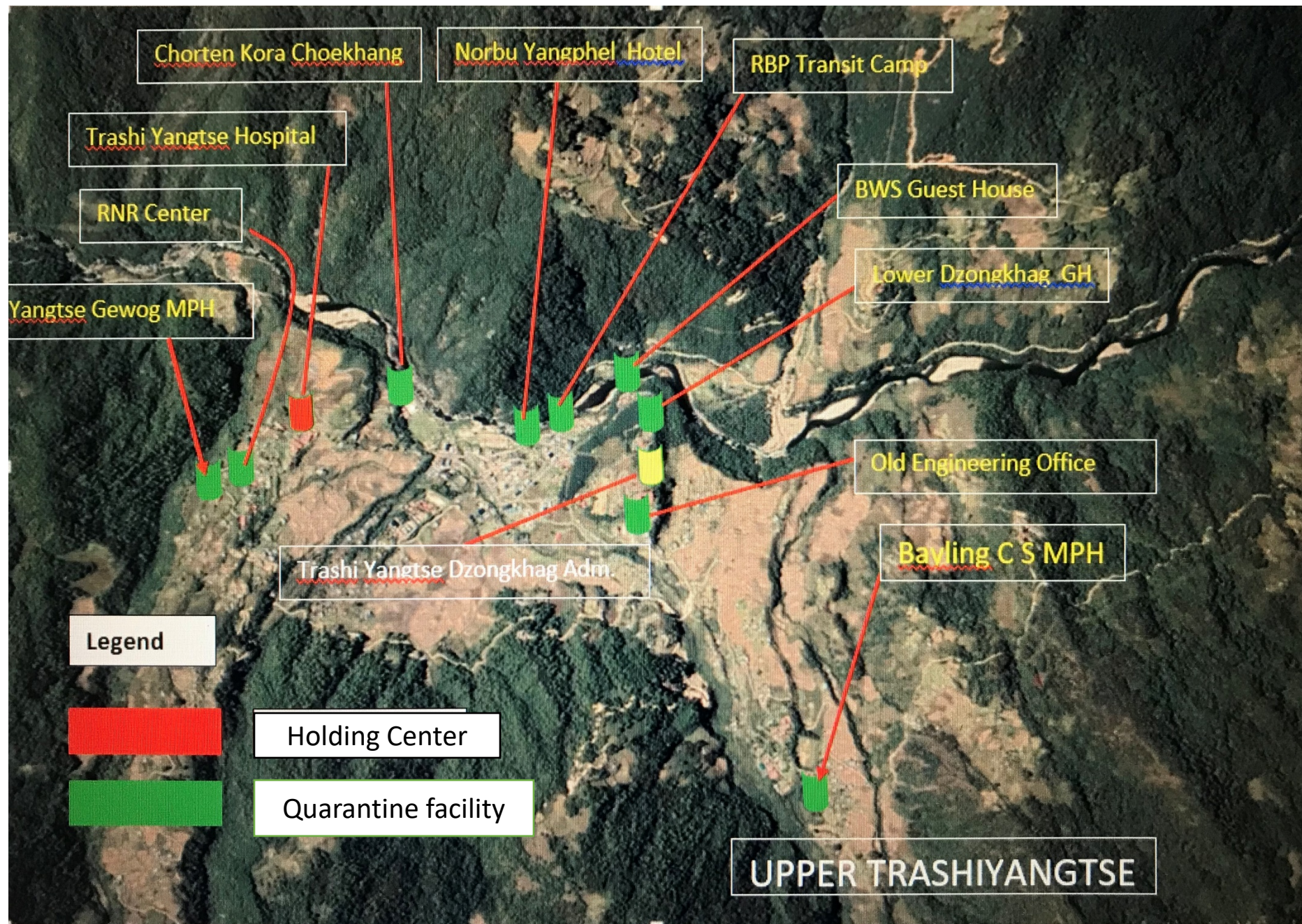
Center established at TYLSS MPH & TCS conference hall.

Facilities

- Fixed line 2
- Wi-Fi connection.
- Dedicated projector
- Essential stationaries.
- 2 printer and a desk top.
- Stations set up for all 5 desks.
- Refreshment corner and dedicated kitchen
- Tele/ video conference facilitates esp. for conference with other centers.

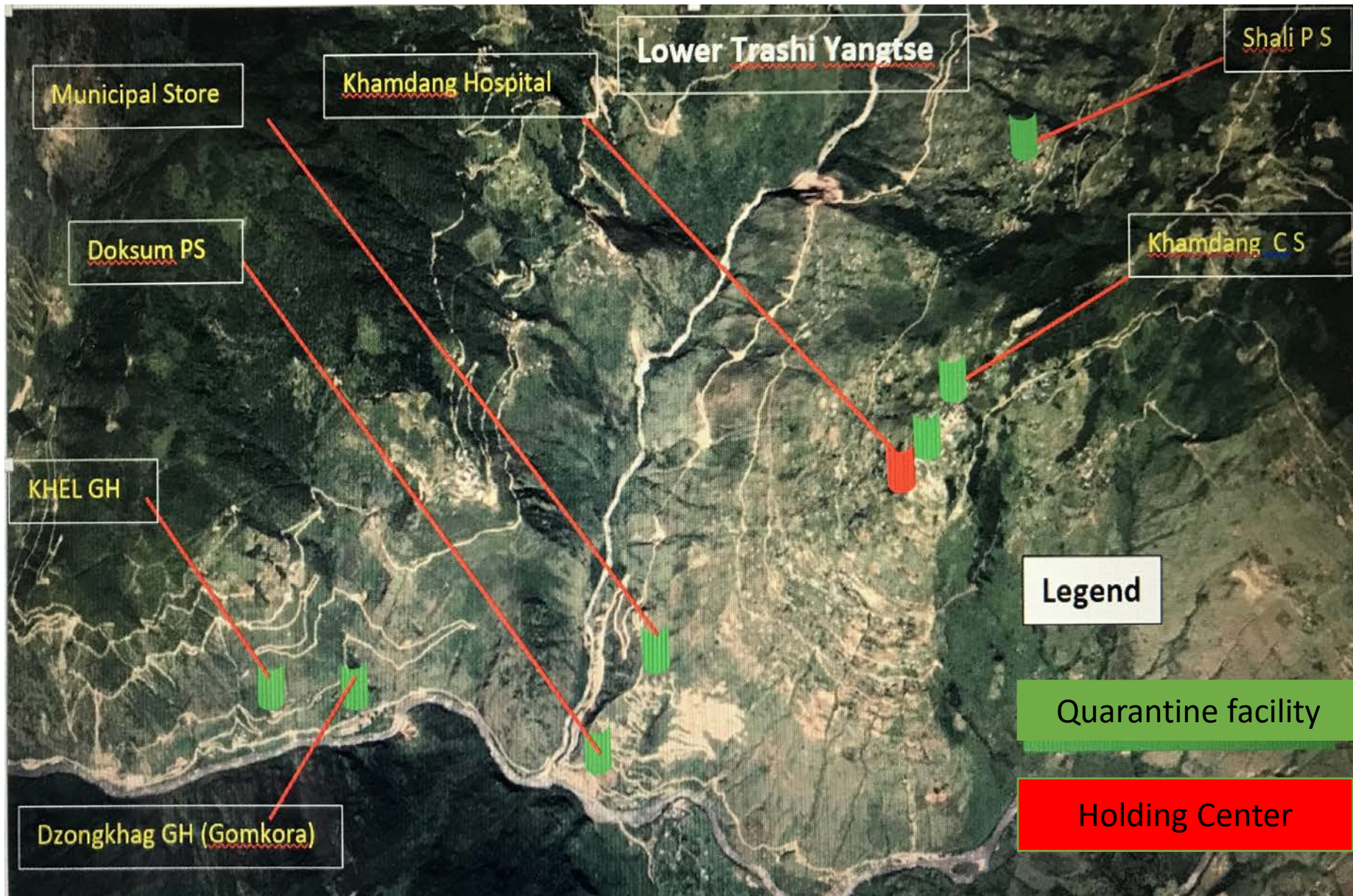
Identified Quarantine Facilities

Upper Trashi Yangtse					
Sl. No.	Name of Facility	Location	Rooms	Bed Capacity	Contact No.
1	Old Engineering office	Yangtse Throm	9	12	17672556
2	Lower Dzongkhag GH	Yangtse Throm	8	15	17614716
3	BWS GH	Yangtse Throm	4	10	17810956
4	RNR Center	Yangtse Throm	6	12	17715109
5	Bayling CS Classroom	Yangtse Throm	32	128	17630104
6	Bayling CS MP hall	Yangtse Throm	2	60	17614688
7	RBP Transit Camp	Yangtse Throm	3	6	17304087
8	Chorten Kora Choekhangs	Yangtse Throm	2	60	17806008
9	Yangtse Gewog MPH	Yangtse Throm	1	10	17701219
10	Yak Hotel	Yangtse Throm	6	12	17876562
11	Karmaling Hotel	Yangtse Throm	9	18	17731140
12	Norbu Yangphel Hotel	Yangtse Throm	8	14	17867255
	TOTAL		90	357	



Identified Quarantine Facilities

Lower Trashi Yangtse					
Sl. No.	Name of Facility	Location	Rooms	Bed Capacity	Contact No.
1	KHEL GH	Dukulung	20	60	77707765
2	Tshenkharla CS	Khamdang Gewog	32	150	17760158
3	Doksum PS	Khamdang Gewog	7	28	17701650
4	Khamdang Gewog MPH	Khamdang Gewog	3	9	17802442
5	Shali PS	Khamdang Gewog	7	28	77659856
6	Municipal Store	New Doksum Throm	4	8	17839056
7	Dzongkhag GH	Gomphu Kora	8	14	17806008
8	Thragom LSS	Yallang Gewog	1	10	17130621
9	Kheni LSS	Khamdang Gewog	1	10	17669764
	TOTAL		81	275	



IDENTIFIED HELIPAD

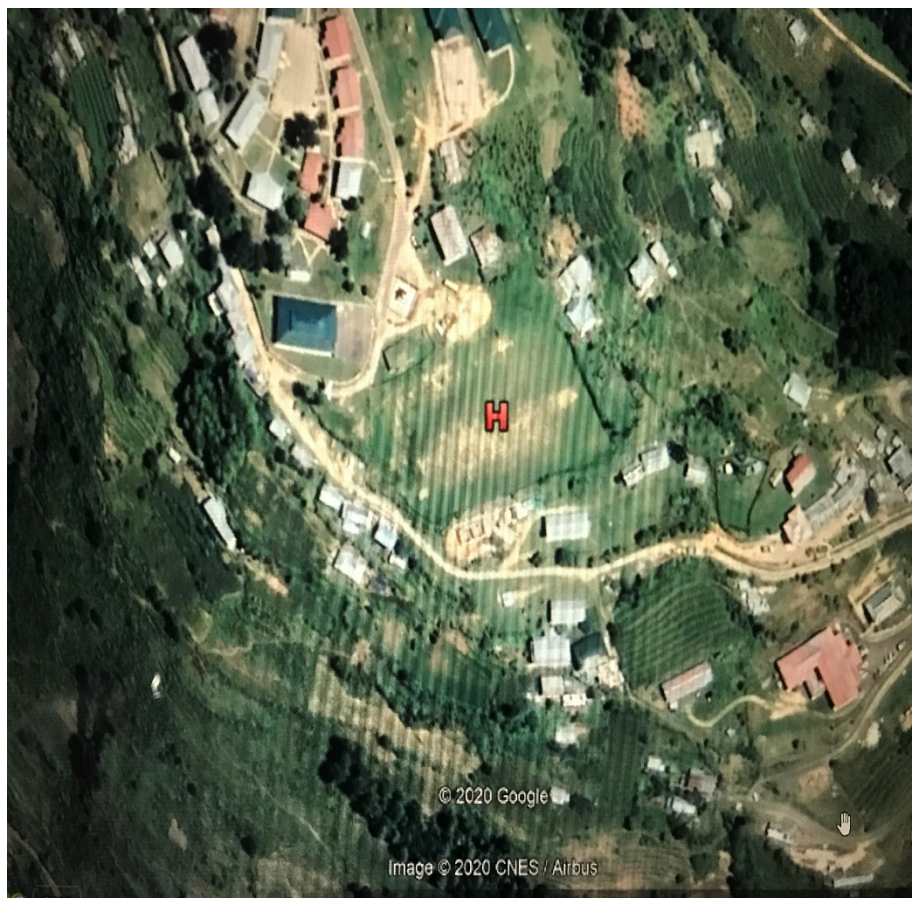
LOWER TRASHI YANGTSHI

Coordinates

Latitude:- 27°27'47.74"N

Longitude:- 91°34'12.85"E

Elevation :- 6379 ft



UPPER TRASHI YANGTSE

Coordinates

Latitude:- 27°36'27.22"N

Longitude:- 91°29'53.74"E

Elevation :- 5796 ft



Lock down Strategy

1- Economy perspective

2- Preparedness perspective

3- Security perspective

Economy Perspective

- Initiated activities from livestock and agriculture sector to:
 - identify potential areas of mass production.
 - List the technical and financial backups needed.
 - Estimate current production and surge capacity if needed.
- On-going collection of essential goods in local shops and consumption pattern.
- Collection of estimated individual household consumption of essential goods from all gewogs and throms.

- Civil servants were given the opportunity to make kitchen garden at National Seed Center, Jachenphu.
- Established a different unit under Planning Desk of ICS to monitor price hike in local markets.

Food security in lock down

Projection of essential Food items for 50% of the population for 3 months

Total Population : 17,078

NFSR population by age group (5-79) : 7,628

Sl. No	Items	Per capita food consumption per person (Kg/day)	No of days	Requirement for 3 months (MT)	Current Stocks(MT) As of 18/03/20	Shortfall (MT)
1	Rice	0.274	90	188.2	27.2	161
2	Oil	0.027	90	18.54	22.4	In stock
3	Pulses	0.011	90	7.55	0.2	In stock
4	Salt	0.005	90	0.45	0.64	In stock

NB: The FCB Head Office is expediting the delivery of balance supplies and assured the stock will be ready by 15th of April 2020. However, current stock might change as per the daily sales record.

Note: Other essential source of nutrients like fresh vegetables, chilies, potatoes and eggs are available within the Dzongkhag

Distribution of Essential Food Items

- Upper Trashi Yangtse– From Yangtse FCB
- Lower Trashi Yangtse– From Doksum FCB go-down.
- Transportation – From FCB go-down The responsible person for logistics shall arrange transport to the respective Gewog centers.
- Security at go-down and during distribution has been worked out.
- The distribution process is in the refining stage.

Security perspective

- Sealed the international border with strict patrolling.

Type	Numbers	Remarks
Vehicular checkpoints	3	
Traditional routes (foot path)	7	
Additional routes	4	To talk with Lhuentse Dzongkhag.

- Man power requirement has been worked out.

Medical Preparedness

Health Infrastructure:

Infrastructures	Number
Hospital (20 bedded)	01
Hospital (10 bedded)	01
Primary Health Care Centre	07
Sub-post	02
Ambulance	03
Utility van	01

Human Resource:

Category	Numbers
Medical Doctor	03
GDDS	02
Traditional Drungtsho/sMenpa	04
Health Assistant	19
Nurse	21
Technicians and others	19
Support staffs	32 (including PHC caretakers)
Total	98

Strategy for COVID Response:

Trashi Yangtse Dzongkhag Hospital:

- Function as COVID Treatment Center for the Dzongkhag (30 beds set up at Dzongkhag Court Complex).
- Build Health HR capacity from other health centers (within Dzongkhag) in phase wise as per the back-up plan.
- Coordinate the medical responses activities (EOC).

Strategy for COVID Response:

Trashi Yangtse Dzongkhag Hospital:

- Provide Flu clinic and Quarantine services for people of Upper T/Yangtse.
- Manage all in-patient admissions (including those of Khamdang Hospital).
- Provide routine OPD and CHU services.

Strategy for COVID Response:

Khamdang Hospital (10 bedded):

- Provide emergency services 24x7.
- Transfer all in-patient admissions to T/Yangtse Hospital.
- Provide routine OPD & CHU services.

Strategy for COVID Response:

Khamdang Hospital (10 bedded):

- Provide Facility Quarantine and Flu Clinic services (Lower T/Yangtse).
- Provide sample collection & shipment for COVID suspects.
- Provide holding room for patients till samples results are out.

Routine Essential Medical Services:

- A team led by DHO is currently working on the contingency plan.

Considering:

- Establishment of mobile clinics for ANC, PNC, Growth monitoring and NCD follow ups.
- ORCs may be used.
- Ear marked back up ambulances for patient transport.
- Down scale non-essential medical services and identify health priorities area wise.
- Capacity building of VHWs and SHCs for first aid courses.

ISSUES AND CHALLENGES

- Communication post paid sim or vouchers and additional Very High Frequency(VHF) sets.
- Single source of information from ministries and departments.
- PPEs including coverall- status and supply system from buffer stock at Mongar.
- Ambulance for COVID-19- modification of Toyota/ Bolero
- Patient transfer process
- Information sharing between [Emergency Operating Centers](#) (EOCs) of six eastern Dzongkhags.
- Confusion and miscommunication over release of people under home quarantine.
- Possibility of impersonation on extracting information, so need to streamline line of reporting with written instrument.
- Procurement of logistic materials

Kadrinche La

Situation: Yellow

Scenario: No confirmed cases of COVID-19 in Trashi Yangtse

- Continue implementing the existing measures put in place
- Engage Local Leaders of the Eight Gewogs and Throm Representatives for advocacy and awareness
- Enforce the SoPs and Government Directives

Situation: Yellow

Scenario: No confirmed cases of COVID-19 in Trashi Yangtse

- Conduct daily COVID-19 awareness and screening at the
- All schools will conduct advocacy and awareness during assembly everyday
- Designated official will keep conducting advocacy for passenger buses and taxis

Additional Measures to be Implemented

- All asymptomatic travelers from affected countries shall be advised for home quarantine for 14 days from the day of arrival into the country
- Monitor compliance with public notifications
- Mobilize health professionals from the pool of retired health officials

Situation : Orange

Scenario: one or more isolated confirmed cases in Trashi Yangtse Dzongkhag without secondary transmission

1. Panic within the community
2. Panic purchasing leading to hoarding of essential food supplies and price escalation

Situation : Orange

Scenario: one or more isolated confirmed cases in Trashiyangtse without secondary transmission

- 4. Shortage of fuel and medicines
- 5. Pressure on the limited medical facilities at the Trashi Yangtse Hospital
- 6. Shortage of manpower for surveillance and support services
- 7. Adverse impact on tourism industry

Measures

1. Activate Dzongkhag Incident Command System
2. Activate Health Rapid Response Team
3. Partial lockdown of Trashiyangtse if confirmed cases arises at neighbouring Dzongkhag (Trashigang and Mongar)
4. Scale up advocacy and counselling to address panic among population
5. Strictly monitor and regulate price of essential commodities
6. Closure of all schools
7. Conduct coordination meeting with stakeholders and local leaders to avoid confrontations

Contd...

8. Mobilize Desuups, Red Cross Volunteers and Teachers immediately
9. Cordoning the designated isolation and quarantine facilities by the RBP
10. Strict enforcement of mandatory declaration of travel history
11. Continue enforcement of prohibition on all public gatherings
12. Provide advisory to avoid all non-essential travels to border towns

Contd...

- 13. Step up health monitoring and surveillance in the Gewogs
- 14. Step up mobile surveillance along the border areas
- 16. Carry out contact tracing as per the established protocol

Situation: Red

Scenario: Multiple cases with local transmission

- Multiple cases in Trashi Yangtse and across the neighbouring Dzongkhags
- Extreme panic within the community
- Breakdown in supply chain of essential items
- Possible disruption of law and order in the community

Situation : Red

Scenario: Multiple cases with local transmission

- Extreme stress on health infrastructure, medical supplies, and manpower
- Shortage of essential food items and fuel supply
- Likelihood of COVID-19 infection spreading to neighboring Dzongkhags
- Profound impact on local economy

Measures:

- Lockdown and complete sealing of Dzongkhag
- Mobilization of medical backup teams from neighboring hospital and Mongar Referral Hospital
- All medical supplies required for Trashi Yangtse will be mobilized from MSDD
- Rationing the distribution of essential items