

Emergency Preparedness and Response Action Plan (COVID-19)

**Dzongkhag Administration
Pema Gatshel
17th March 2020**

Risk/Vulnerability Assessment

- Bordering Nganglam Dungkha and Samdrupjongkhar Dzongkhag which shares long and porous borders with Assam.
- High frequency of Gypsum truck drivers plying daily to and from Samdrupjongkhar – (100 truckers daily).
- Lack of awareness on COVID-19 among general public.
- Possible outbreak of dengue with onset of monsoon.
- Poor road condition/major road block during monsoon season – in case the pandemic prolongs through monsoon.
- **Lack of public transportation**

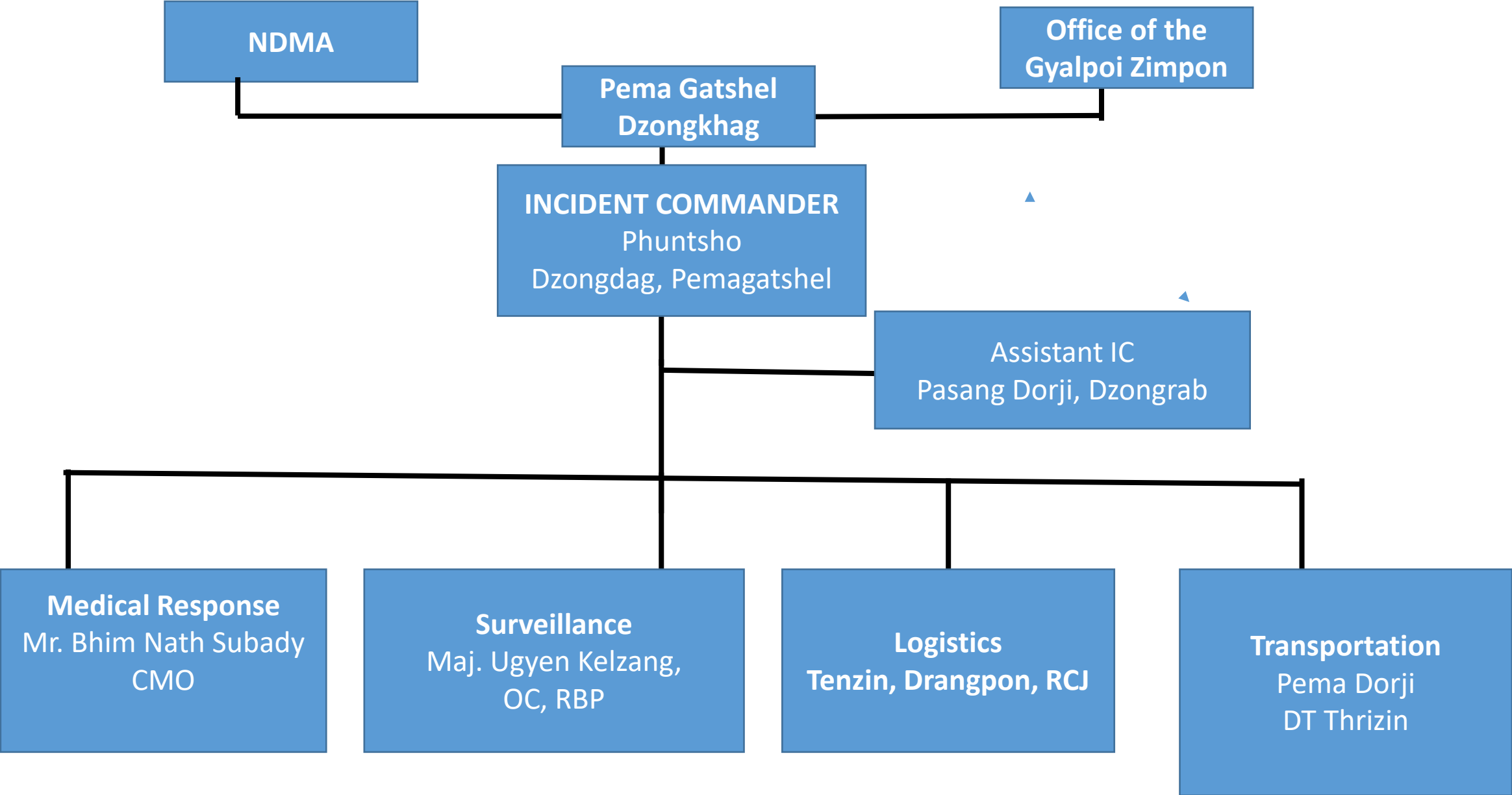
Measures Undertaken

- Emergency stakeholders' Coordination Meeting conducted on 8th February 2020
- Constituted Dzongkhag COVID-19 Response Team
- Established flu clinics at Pemagatshel hospital (10-03-2020)
- Conducted aggressive advocacy and awareness in schools, institutions, business communities and Gewogs
- Gewog Thrizin conducted awareness program in their respective Gewog.
- Conducted awareness program for Gypsum truckers on 14.03.2020

Contd...

- Notified public to avoid mass gatherings and casual travels to border towns
- Instituted hand sanitizing system in institutions and offices
- Set up isolation and quarantine facilities
- Preventive measures and contingency plans implemented in all Schools.

Dzongkhag Incident Command System



Dzongkhag COVID-19 Response Team

Sl. No.	Name	Designation	Responsibility	Contact Number
1	Mr. Phuntso	Dzongda	Incident Commander	17607425
2	Mr. Pasang Dorji	Dzongrab	Vice Incident Commander	17387753
3	Dr. Bhim Nath Subadey	CMO	Medical Advisor	17663542
4	Mr. Tenzin Liwang	Drangpon, RCJ	Logistics Head	17890685
5	Maj. Ugyen Kelzang	Officer Commanding	Surveillance, Contact Tracing & Security Head	17471177
6	Mr. Pema Dorji	Dzongkhag Thrizin	Transportation Head	17688513
7	Mr. Ugyen Tshering	Deputy Dzongkhag Thrizin	Liaison and coordination for Gewogs	17821268
8	Mr. Jigyel Phuntsho Dhargay	Throm Tshogpa	Liaison and coordination for Throm	77632001
9	Mr. Phuntsho Wangdi	Desuup Coordinator,	Shelter & Evacuation	17691282
10	Mr. Kinley Dorji	DHO	Member Secretary	17621779
11	Mr. Dorji Pasang	CDEO	Quarantine Incharge	17612419
12	Mr. Letro Dorji	Principle Engineer, DOR	Maintain road accessibility	17739839

Note: Co-opted Members – All Regional heads, Sector Heads and Gups. Details attached as Annexure . 1

Isolation Facilities

Sl. No.	Location	Facility	Capacity (Bed)	Responsibility
1	Pema Gatshel Hospital	4 bedded rooms with 1 common toilet facility	4	Mr. Norbu, Nurse, Pemagatshel Hospital, (17713724)
2	Pema Gatshel Middle Secondary School	8 dormitory with common toilet	64	Mr. Yeshey Jamtsho, Principal, PMSS (17265910)

Quarantine Facilities

Sl. No.	Name and Location	Facilities	Capacity	Responsibility
1	Dzongda's Residence, Denchhi	12 Rooms with 4 toilets	24	Mr. Tshering Dorji, ADHO (17660427)
2	Nangkor Central School	24 rooms with common toilet	144	Mr. Phurba Tashi, Principal, NCS (17122323)
3	Nangkor Central School	2 MPH	50	

Rest Room Facilities duty staff and security

Sl. No.	Name and Location	Facilities	Capacity	Responsibility
1	Dzongkhag Guest House	8 Rooms with attached toilet	16	Mr. Sangay Drubjyur, ADM (17454250)
2	Dungsam Guest House	4 rooms with attached toilet	8	Mr. Sonam Chojay, Proprietor (7691273)
3	Karsel Hotel	7 rooms with 4 attached and 3 common toilet	14	Mr. Pema Tshering, Proprietor (17629498)

Accommodation for official visiting from National Disaster Management Authority (NDMA), MoH & MOHCA

Sl. No.	Name and Location	Facilities	Capacity	Responsibility
1	SMCL Guest House, Khothakpa	4 Rooms with attached Toilet	8	Mr. Thubten Gyaltshen Dorji, ADM, SMCL ()
2	BPC Guest House, Nangkor	4 Rooms with attached toilet	8	Mr. Ugyen Namdrul, Manager, TMD, BPC (17911075)
3	Guest House, Denchi Dzong Construction Project	3 rooms with common toilet	6	Mr. Lhaten Dorji, PM, DDCP (17697328)

Situation: Yellow

Scenario: No confirmed cases of COVID-19 in Pema Gatshel

- All schools will continue to conduct advocacy and awareness during assembly everyday (Mr. Dorji Pasang, CDEO)
- Conduct advocacy for passenger buses plying out of Pemagatshel (RSTA and RBP Traffic)

Situation: Yellow

Scenario: No confirmed cases of COVID-19 in Pema Gatshel

- Continue implementing the existing measures put in place
- Officially notify gewogs and institutions to avoid mass gatherings.
- Closely coordinate with Nganglam Dungkhag and Samdrup Jongkhar Dzongkhag COVID-19 Response Team (Mr. Kinley Dorji, DHO).
- Strictly enforce the SoPs and Government Directives

Additional Measures to be Implemented

- Conduct weekly Dzongkhag COVID-19 Response Team coordination meeting (Every Friday 2-5 PM)
- Identify interim checkpoints at Kherigonpa Forest checkpoint and Tshobaley Forest Checkpoint, and Train foresters on screening method (CFO)
- Immediately activate above checkpoint in case Nganglam Dungkhag, Samdrup Jongkhar, Mongar and Transhigang Dzongkhags enter Orange Zone
- Official notification to avoid unnecessary travel outside the Dzongkhag
- Identify quarantine facility at Gewog level

Additional Measures to be Implemented

- All asymptomatic travelers from affected Dzongkhag (Particularly Nganglam and Samdrupjongkhar)/countries shall be advised for home/facility quarantine for 14 days from the day of arrival into Pema Gatsel
- Engage Local Leaders of the 8 Gewogs and Throm Representatives for advocacy and awareness (Gups and Thromdey Thuemi)
- Monitor compliance with public notifications
- Instruct Public to start vegetable and cereal production (DAO and Gups)

Map showing the strategic Locations



Situation : Orange

Scenario: One or more isolated confirmed cases in Pemagatshel without secondary transmission

1. Panic within the community
2. Panic purchasing leading to hoarding of essential food supplies and price escalation
3. Possible migration out of Pema Gatshel

Situation : Orange

Scenario: one or more isolated confirmed cases in Pema Gatshel without secondary transmission

4. Shortage of fuel and medicines

5. Pressure on the limited medical facilities at the Pema Gatshel Hospital

6. Shortage of manpower for surveillance and support services

7. Adverse impact on business community including SMCL

Measures

1. Activate Incident Command System
2. Activate Rapid Response Team led by Dr. Bhim Nath Subady (SoP in place)
3. Partial lockdown of Pemagatshel
4. Scale up advocacy and counselling to address panic among population (CDEO and DHO to disseminate information to School Counsellors and Health workers in respective schools and communities)
5. Strictly monitor and regulate price of essential commodities (Thromdey Thuemi and BAFRA)
6. Closure of all schools (CDEO)
7. Alert medical back up teams from the 8 Gewog Primary Health Centers and Mongar ERRH

Contd...

8. Mobilize Desuups, Red Cross Volunteers and Teachers(10 Desuups and 5+ RC Volunteers)
9. Cordoning the designated isolation and quarantine facilities by the RBP
10. Strict enforcement of mandatory declaration of travel history
11. Continue enforcement of prohibition on all public gatherings
12. Provide advisory to avoid all non-essential travels to affected areas

Contd...

13. Coordinate with neighboring Dzongkhag/Dungkhag

14. Step up health monitoring and surveillance in the Gewog Centers

15. Activate screening at Kherigonpa and Tshobaley

16. Carry out contact tracing as per the established protocol

Situation: Red

Scenario: Multiple cases with local transmission

- Multiple cases in Pemagatshel
- Extreme panic within the community
- Mass exodus to other places
- Breakdown in supply chain of essential items
- Possible disruption of law and order in the community

Situation : Red

Scenario: Multiple cases with local transmission

- Extreme stress on health infrastructure, medical supplies, and manpower
- Shortage of essential food items and fuel supply
- Likelihood of COVID-19 infection spreading to neighboring Dzongkhags
- Non availability of ventilators
- Profound impact on local economy

Measures:

- Complete Lockdown
- Mobilization of medical backup teams from Mongar Referral Hospital
- All required medical supplies mobilized from MSDD, Phuntsholing
- Rationing the distribution of essential items

Projection of essential Food items for 50% Of Population for 3 months

SL.NO	Items	Requirements	Current Stock	Short Fall
1	Rice (MT)	263.52	29.395	234.125
2	Cooking Oil(MT)	25.97	6.135	19.835
3	Pulses (MT)	10.58	0.05	10.53
4	Salt (MT)	-	0.264	-
5	Sugar (MT)	-	0.49	-
6	Milk Powder (MT)	-	0.3524	-
7	cheese (MT)	-	0.3544	-

Remark:

1. We have started receiving the separate NFSR reserve stock.
2. Salts, sugar, milk powder and cheese are not included in NFSR, still FCBL are arranging as special reserve stocks for NFSR.
3. As of now only 22(MT) of Rice and 4(MT) of oil has arrived, soon we are receiving pulses other essential items and also Balance stocks.

Projected Crops and livestock production

Sl#	Particular	Projected production(MT) in	Projected production (in MT)in 2020
1.	Maize (MT) in next 6 months	60892	60892
2.	Vegetables (MT)/year (Chilies, cabbage, Radish, potatoes, Tomatoes, and beans)	378	378
3.	Eggs (numbers/month	63, 000	63, 000
4.	Cheese (bools/month)	30, 600	30, 600
5.	Butter (Kgs)/month	2700	2700
6.	Milk (Lts)	42,000	42,000

Measures contd...

- Follow up with FCB Head Office to expeditiously replenish the food supply stock requirements
- Closely monitor and regulate the distribution of essential items
- Pursue aggressive advocacy and counselling to address panic among population
- Mobilize medical back up teams from the eight Gewog Primary Health Centres
- Activate surge capacity from Mongar Referral Hospital and National Referral Hospital

Measures contd...

- Mobilize Ambulances from Riserbo Hospital, Wamrong and from the pool of Government vehicles and private that have been identified and placed under the charge of the Transport Coordinator
- Monitor and restrict the movement of people out of Pemagatshel
- Operationalize the isolation and quarantine facilities
- Carry out contact tracing as per the established protocol in collaboration with RBP

Measures contd...

- Enforce prohibitions and curfew as and when necessary
- Aggressive advocacy and communication in non affected places
- National level interventions needed to reverse economic downturn

Waste from Isolation Rooms

1. Treat with 0.5% bleaching solution for 25-30 minutes
2. Dispose off the waste by Mr. Norbu, Nurse, Infection Focal Person
3. Dead body
 - Handover the corpse to the deceased family member.

Cremation Services Coordinator – Lhakpa Tamang , Dental Hyeginist, PGH
Person

- Cremation ground identified at Cherongri
- Firewood to be arranged by CFO, Pema Gatshel.
- Cremation services to be performed by Dratshang Meshi Lam (

SoPs for Dealing with COVID-19

- SoP for Home/ hotel Quarantine
- SoP for designated facilities
- Sop for waste management
- Sop for proper disposal of bodies and cremation
- SoP for partial lockdown of Pemagatshel
- Emergency Preparedness & Operational Response Plan COVID-19

List of Annexures

- Annexure 1: List of Co-opted Member
- Annexure 2: List of Vehicles
- Annexure 3: Measures
- Annexure 4: List of foreign workers
-